

## NOVUS SKY MAHMUTLAR ALANYA

120 000 € —480 000 €

|                         |   |                              |                   |
|-------------------------|---|------------------------------|-------------------|
| <b>Lot №:</b>           | 9035-2201                                 | <b>Type:</b>                 | Sale - Apartments |
| <b>Location:</b>        | Turkey - Mediterranean region - Mahmutlar | <b>Area:</b>                 | 69 m <sup>2</sup> |
| <b>Bedrooms:</b>        | 1   | <b>Bathrooms:</b>            | 1                 |
| <b>Renovation:</b>      | Hoboe                                     | <b>Balconies:</b>            | 1                 |
| <b>Floor:</b>           | 3   | <b>Number of floors:</b>     | 12                |
| <b>Heating:</b>         | Autonomous heating                        | <b>Year of construction:</b> | 2023              |
| <b>Distance to sea:</b> | 200 m                                     | <b>Distance to airport:</b>  | 28 km             |

### Property features:

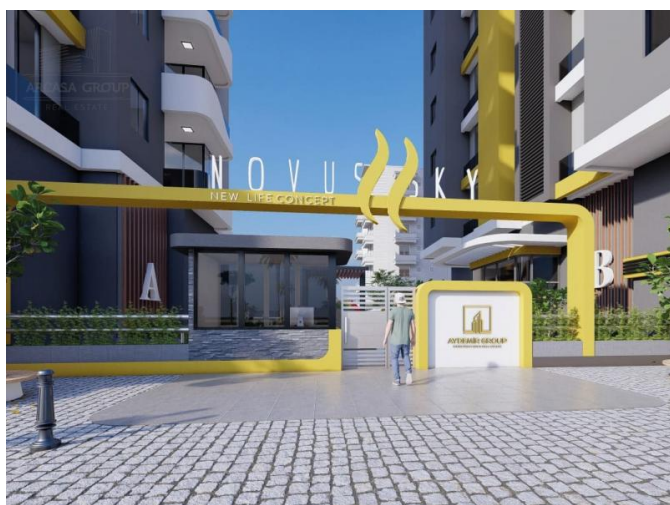
|              |                  |                |           |
|--------------|------------------|----------------|-----------|
| Balcony      | Swimming pool    | Parking        | Jacuzzi   |
| Internet     | Air conditioning | Concierge      | Elevator  |
| Loggia       | Park             | Parking        | Signaling |
| Satellite TV | Terrace          | Fitness center |           |

### Description:

**Novus Sky**, which is inter twined with social areas and city life, covers an area of 3350 square meters. There are different apartment options such as 1+1, 2+1, and 4+1 in the complex consisting of 2 blocks and 12 floors.

In addition to being 120 meters from the sea, our project is located in a position to meet all your needs with cafe, restaurant, bar, and shopping center options around it. Steel doors, interior automation systems, special size ceramics on the surfaces that receive water, antibacterial walls for your health, and insulated exterior materials are used in our apartments.

120 000 € —480 000 €





120 000 € —480 000 €

